

Reviewed 1/11/17



Reviewed by CS on 1/11/17

1/6/2017

**Worklist: 1461**

<u>LAB CASE</u>	<u>ITEM</u>	<u>TASK ID</u>	<u>DESCRIPTION</u>
C2017-0011	1	73620	AM 3 Urine Carboxy-THC
C2017-0017	1	73621	AM 3 Urine Carboxy-THC
C2017-0021	1	73622	AM 3 Urine Carboxy-THC
M2016-5032	3	73625	AM 3 Urine Carboxy-THC
M2016-5151	3	73624	AM 3 Urine Carboxy-THC
P2016-2919	2	73623	AM 3 Urine Carboxy-THC



Area Percent Report

Data Path : D:\DATA\2017\1-5-17 Gen Drug and C-THC\  
Data File : 03201029.D  
Acq On : 05 Jan 2017 23:05  
Operator :  
Sample : negative control  
Misc : lot 121616; am 3  
ALS Vial : 32 Sample Multiplier: 1

Integration Parameters: autoint1.e  
Integrator: ChemStation

Method : D:\DATA\2016\852016a ta\psilocyn .D\TOXI-A 10115.M  
Title :

Signal : EIC Ion 371.00 (370.70 to 371.70): 03201029.D\data.ms

peak #	R.T. min	first scan	max scan	last scan	PK TY	peak height	corr. area	corr. % max.	% of total
1	3.905	15	23	32	BV	42839	585109	100.00%	100.000%

Sum of corrected areas: 585109

Signal : EIC Ion 473.00 (472.70 to 473.70): 03201029.D\data.ms

peak #	R.T. min	first scan	max scan	last scan	PK TY	peak height	corr. area	corr. % max.	% of total
1	5.184	246	261	277	BB	14249	289942	100.00%	100.000%

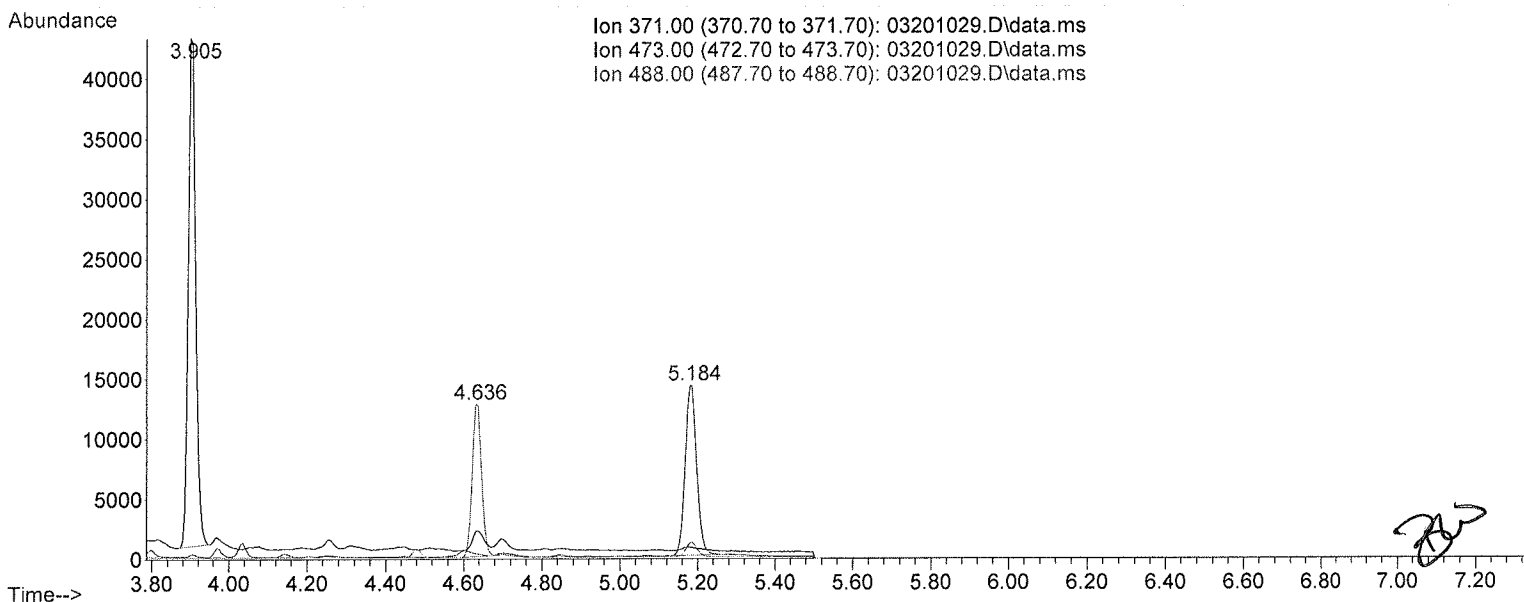
Sum of corrected areas: 289942

Signal : EIC Ion 488.00 (487.70 to 488.70): 03201029.D\data.ms

peak #	R.T. min	first scan	max scan	last scan	PK TY	peak height	corr. area	corr. % max.	% of total
1	4.636	150	159	168	BV	12762	212053	100.00%	100.000%

Sum of corrected areas: 212053

TOXI-A 10115.M Thu Jan 05 23:27:57 2017



Area Percent Report

Data Path : D:\DATA\2017\1-5-17 Gen Drug and C-THC\  
 Data File : 03101043.D  
 Acq On : 06 Jan 2017 01:16  
 Operator :  
 Sample : positive control  
 Misc : lot FE042312-01 WS in negative lot 121616; am 3  
 ALS Vial : 31 Sample Multiplier: 1

Integration Parameters: autoint1.e  
 Integrator: ChemStation

Method : D:\DATA\2016\852016a ta\psilocyn .D\TOXI-A 10115.M  
 Title :

Signal : EIC Ion 371.00 (370.70 to 371.70): 03101043.D\data.ms

peak #	R.T. min	first scan	max scan	last scan	PK TY	peak height	corr. area	corr. % max.	% of total
1	3.903	16	23	32	PV	53228	720355	7.31%	6.812%
2	4.696	162	170	204	VV	559751	<u>9854152</u>	100.00%	93.188%

Sum of corrected areas: 10574508

Signal : EIC Ion 473.00 (472.70 to 473.70): 03101043.D\data.ms

peak #	R.T. min	first scan	max scan	last scan	PK TY	peak height	corr. area	corr. % max.	% of total
1	4.698	161	170	202	BB	249307	<u>4360988</u>	100.00%	95.382%
2	5.179	249	260	273	BB	10139	211131	4.84%	4.618%

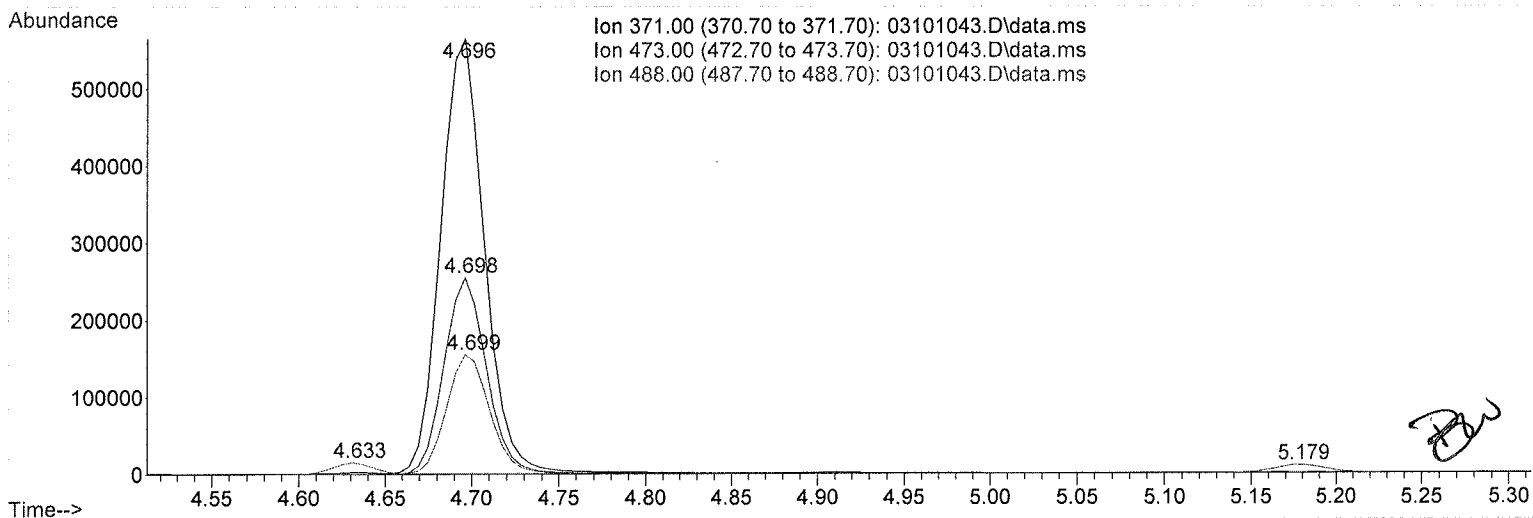
Sum of corrected areas: 4572118

Signal : EIC Ion 488.00 (487.70 to 488.70): 03101043.D\data.ms

peak #	R.T. min	first scan	max scan	last scan	PK TY	peak height	corr. area	corr. % max.	% of total
1	4.633	149	158	164	BV	15028	251201	9.27%	8.486%
2	4.699	164	171	199	VB	152689	<u>2708921</u>	100.00%	91.514%

Sum of corrected areas: 2960122

TOXI-A 10115.M Fri Jan 06 07:08:33 2017



Area Percent Report

Data Path : D:\DATA\2017\1-5-17 Gen Drug and C-THC\  
 Data File : 03101028.D  
 Acq On : 05 Jan 2017 22:56  
 Operator :  
 Sample : positive control  
 Misc : lot FE042312-01 WS in negative lot 121616; am 3  
 ALS Vial : 31 Sample Multiplier: 1

Integration Parameters: autoint1.e  
 Integrator: ChemStation

Method : D:\DATA\2016\852016a ta\psilocyn .D\TOXI-A 10115.M  
 Title :

Signal : EIC Ion 371.00 (370.70 to 371.70): 03101028.D\data.ms

peak #	R.T. min	first scan	max scan	last scan	PK TY	peak height	corr. area	corr. % max.	% of total
1	3.904	15	23	32	PV	51273	747975	7.45%	6.938%
2	4.698	162	170	205	VV	533293	<u>10033412</u>	100.00%	93.062%

Sum of corrected areas: 10781387

Signal : EIC Ion 473.00 (472.70 to 473.70): 03101028.D\data.ms

peak #	R.T. min	first scan	max scan	last scan	PK TY	peak height	corr. area	corr. % max.	% of total
1	4.699	161	171	204	PV	239017	<u>4457816</u>	100.00%	94.690%
2	5.182	248	260	279	BB	11649	249986	5.61%	5.310%

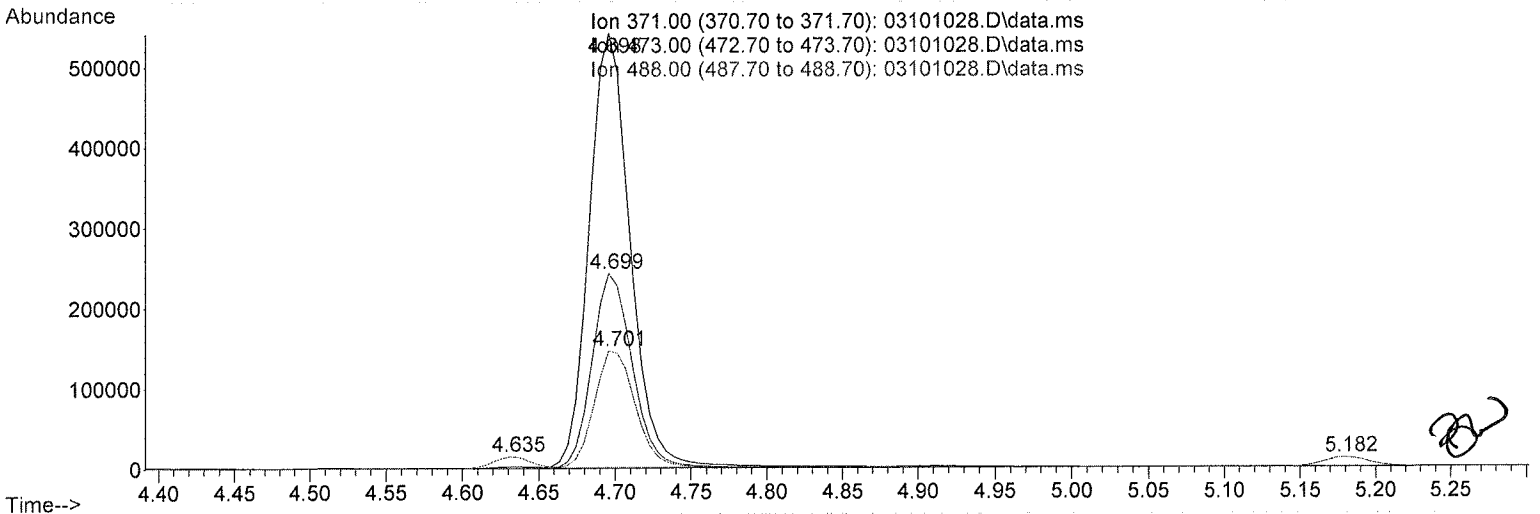
Sum of corrected areas: 4707802

Signal : EIC Ion 488.00 (487.70 to 488.70): 03101028.D\data.ms

peak #	R.T. min	first scan	max scan	last scan	PK TY	peak height	corr. area	corr. % max.	% of total
1	4.635	139	159	164	BV	14770	256967	9.27%	8.486%
2	4.701	164	171	204	VB	145559	<u>2771056</u>	100.00%	91.514%

Sum of corrected areas: 3028023

TOXI-A 10115.M Thu Jan 05 23:27:29 2017



Area Percent Report

Data Path : D:\DATA\2017\1-5-17 Gen Drug and C-THC\  
 Data File : 03301030.D  
 Acq On : 05 Jan 2017 23:15  
 Operator :  
 Sample : BRC3  
 Misc : lot 68430; am 3  
 ALS Vial : 33 Sample Multiplier: 1

Integration Parameters: autoint1.e  
 Integrator: ChemStation

Method : D:\DATA\2016\852016a ta\psilocyn .D\TOXI-A 10115.M  
 Title :

Signal : EIC Ion 371.00 (370.70 to 371.70): 03301030.D\data.ms

peak #	R.T. min	first scan	max scan	last scan	PK TY	peak height	corr. area	corr. % max.	% of total
1	3.903	14	23	31	BV	22464	314299	29.96%	21.801%
2	4.697	162	170	193	VB	61659	<u>1049056</u>	100.00%	72.768%
3	4.912	198	210	220	BB 2	4275	78289	7.46%	5.431%

Sum of corrected areas: 1441643

Signal : EIC Ion 473.00 (472.70 to 473.70): 03301030.D\data.ms

peak #	R.T. min	first scan	max scan	last scan	PK TY	peak height	corr. area	corr. % max.	% of total
1	4.698	143	170	190	BB	27114	<u>499578</u>	100.00%	55.105%
2	4.914	203	210	222	BB 2	2952	55608	11.13%	6.134%
3	5.181	250	260	277	BB	16851	351400	70.34%	38.761%

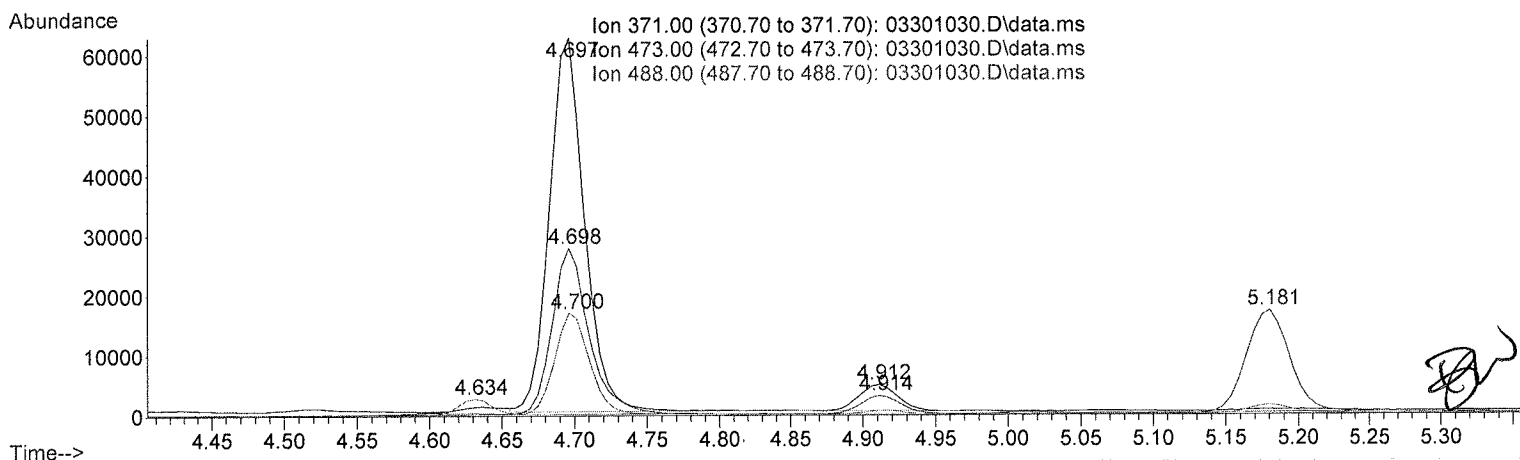
Sum of corrected areas: 906586

Signal : EIC Ion 488.00 (487.70 to 488.70): 03301030.D\data.ms

peak #	R.T. min	first scan	max scan	last scan	PK TY	peak height	corr. area	corr. % max.	% of total
1	4.634	137	158	164	BV	2541	40778	14.60%	12.737%
2	4.700	164	171	181	VV	16590	<u>279381</u>	100.00%	87.263%

Sum of corrected areas: 320159

TOXI-A 10115.M Thu Jan 05 23:28:47 2017



## 2.4.4 Carboxy-THC QC Calculations

Run Date: 1/5/2017

Case Calculations:

Lab Case #: BRC3-68430

EIC Ion 371 Corr. Area:	<u>1049056</u>	
EIC Ion 473 Corr. Area:	<u>499578</u>	473:371 Ratio: <u>0.476</u>
EIC Ion 488 Corr. Area:	<u>279381</u>	488:371 Ratio: <u>0.266</u>

Quality Control Calculations:

Retention Time acceptable range: 4.598 to 4.796

	<i>1st ctrl</i>	<i>2nd ctrl</i>
EIC Ion 371 Corr. Area:	<u>9854152</u>	<u>10033412</u>
EIC Ion 473 Corr. Area:	<u>4360988</u>	<u>4457816</u>
EIC Ion 488 Corr. Area:	<u>2708921</u>	<u>2771056</u>

Approximate minimum corrected area of 371 ion: ~ **1970830**

		Ratio of 473:371			
<i>1st ctrl</i>	<u>0.443</u>	<i>2nd ctrl</i>	<u>0.444</u>	avg.	<u>0.443</u>

Accepted Range  
(+/- 20%) 0.355 - 0.532

		Ratio of 488:371			
<i>1st ctrl</i>	<u>0.275</u>	<i>2nd ctrl</i>	<u>0.276</u>	avg.	<u>0.276</u>

Accepted Range  
(+/- 20%): 0.220 - 0.331

Carboxy-calculation sheet  
Revision 0 effective date 10/23/13  
Issuing authority: Quality Manager